

SUBJECT:	ACTIVE TRAVEL PERFORMANCE
MEETING:	PLACE SCRUTINY COMMITTEE
DATE:	THURSDAY 22ND MAY 2025
DIVISION/WARDS AFFECTED:	ALL

1. PURPOSE:

To provide an update on various aspects of performance with the Active Travel portfolio, and wider associated cross directorate work, to include but not limited to; current strategic & core funded projects, engagement, accessibility and school-based projects.

2. RECOMMENDATIONS:

That Place Scrutiny Committee review the information detailed within this report, and supporting documentation (*Active Travel Presentation*).

3. KEY ISSUES:

- 3.1 Under the 'Active Travel (Wales) Act 2013', there is a statutory requirement for authorities to continuously improve facilities and routes for pedestrians and cyclists. The overall objective is to create a modal shift away from the car for shorter journeys. The production of Active Travel Network Maps which identify existing and potential future routes is a key legal requirement of the Act, as is for any new road schemes or developments to consider the needs of pedestrians and cyclists at design stage. Active Travel has an important part to play in a number of existing policies adopted by Monmouthshire County Council.
- 3.2 Each financial year Welsh Government invites local authorities to bid for funding to deliver Active Travel capital infrastructure projects, as well as providing core funding to support actions in line with the act.
- 3.3 Relating to 3.2, Monmouthshire has seen a significant increase in funding allocated through the national Active Travel Fund. This has been supported internally by a robust governance structure with project managers and project sponsors allocated to each project to support implementation. More information on the funding allocated and project delivery can be found within the supporting presentation.
- 3.4 A strategic focus has been set for Active Travel to provide clarity on our key priorities for route development. This was agreed by members as part of our most recent Active Travel Network Map statutory consultation (2021) and is focused on the following 'to

develop routes up to 3.0 miles where the key destinations focus on travel to; schools, town centres, key employment sites, bus and rail stations’.

- 3.5 Active Travel is aligned with a number of key policies such as our community and corporate plan, future generations and wellbeing objectives, Gwent PSB and decarbonisation plans. Active Travel is a key component of our collective response to climate change and providing a sustainable environment for our future generations.
- 3.6 Whilst the focus of our Active Travel strategic bids have been on Abergavenny, Caldicot and Monmouth (due to limitations in the national bidding criteria) progress has been made on a number of county wide initiatives.
- 3.7 All project design is done in accordance with the Active Travel (Wales) Act 2013 design guidance. Each project follows the Welsh Transport Appraisal Guidance (WelTAG) process through scheme development and consultation, ensuring that accessibility is designed into all schemes for all users.
- 3.8 Use of data and public consultation has informed decision making in Active Travel scheme development and design. A focused and targeted approach to data collection has enabled tracking and monitoring of usage at key points across the county to monitor levels of sustainable transport through our Active Travel dashboard.
- 3.9 Officers continue to work towards maximising Active Travel opportunities right across Monmouthshire. The current focus is on increasing connectivity within our 7 main settlement boundaries, as this is where there is greater opportunity for modal shift (an increase in walking and cycling) in line with our Active Travel strategic focus. There is a longer term ambition to connect communities based on the rurality of Monmouthshire, providing it fits within the grant funding criteria.
- 3.10 Through a coordinated approach to grant funding applications, Monmouthshire County Council has been able to leverage significant levels of grant funding to support project delivery across the county. This coordinated approach has been focused on maximising grant funding opportunities against the agreed project priorities.
- 3.11 Officers will continue to support a county wide approach to Active Travel, providing support and guidance to wider services. Alignment with policy change and adapting to new opportunities, such as the recent curriculum reform in Education, is essential to ensure progress continues to be made. Work with officers in the Road Safety team, leading on education provision across Monmouthshire, is providing education settings with support to develop school travel plans and improve levels of Active Travel through a range of interventions.
- 3.12 Officers continue to work with key departments, such as planning, to maximise the potential of new developments to support the growth of our Active Travel Network. Data captured through our Active Travel Network Map consultation is important to provide detailed solutions and opportunities at pre planning stage.

- 3.13 Promotional work undertaken through the ‘Get More From Your Journey’ campaign sets out clearly the benefits of Active Travel. Continued promotion of Active and sustainable transport is essential for our collective climate emergency response.

4. INTEGRATED IMPACT ASSESSMENT, (includes equality, future generations, social justice, safeguarding and corporate parenting).

The report is for information only, so no impact assessment is required at this time.

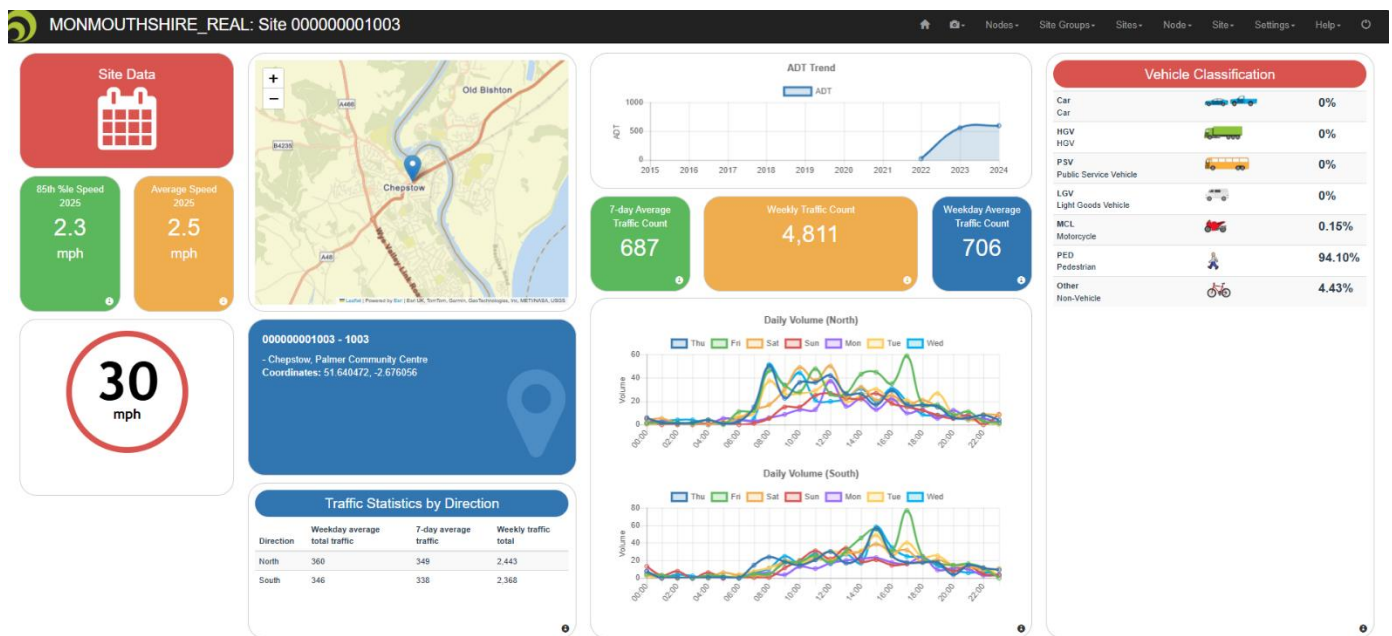
5. OPTIONS APPRAISAL

The report is for information only so no options are presented at this time.

6. EVALUATION CRITERIA

Progress continues to be monitored against the Active Travel Delivery Plan, CCW Service Business Plan and Welsh Government / Transport for Wales Quarterly returns. Robust monitoring and evaluation arrangements are in place to track progress against grant objectives, overseen by the Active Travel Governance Board.

Evaluation of data, both at scheme design and implementation is a key part of work across Active Travel. More information is available within the supporting presentation and a key piece of work that has been developed over recent years is the implementation of data collection at key locations across the county, feeding a central dashboard with live data. An example of this can be seen below:



7. REASONS:

No decisions need to be made at this time.

8. RESOURCE IMPLICATIONS:

There are no resource implications at this time.

9. CONSULTEES:

Strategic Leadership Team
Lead Cabinet Representatives

10. BACKGROUND PAPERS:

Appendix A: Active Travel Presentation – Place Scrutiny 220525

11. AUTHOR:

Paul Sullivan.
Head of Customer, Communication and Engagement.

12. CONTACT DETAILS:

Tel: 07825 853882
E-mail: paulsullivan@monmouthshire.gov.uk